

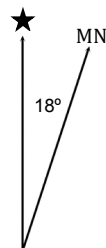
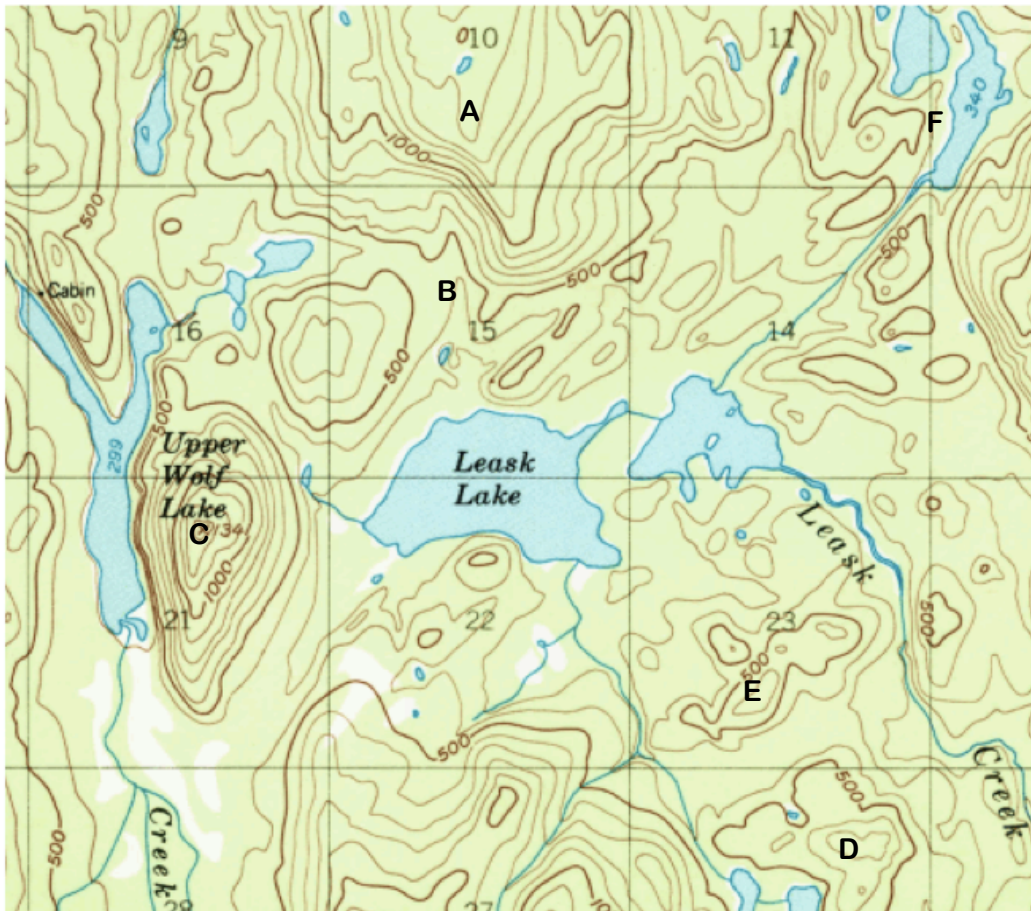
Contour Quiz

Name _____

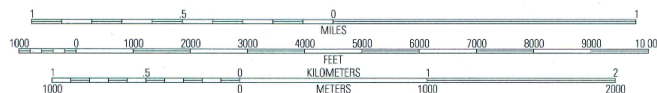
Period _____

Date _____

Part 1: Analyze the topographic map to answer the questions below.



SCALE 1:36 360



CONTOUR INTERVAL = 100 FEET
DATUM IS MEAN SEA LEVEL

1. You are standing at point A. What is your elevation? _____
2. You are standing at point C, looking towards Upper Wolf Lake. Describe the topography directly in front of you. _____
3. You walk from point D to point E. Do you (a) gain elevation, (b) lose elevation, or (c) end at the same elevation? _____
4. A creek joins lake F from the southwest. Does the creek flow into, or out of lake F? _____
5. You walk from point A to point B. You are (a) going up a steep hill, (b) going down a gully, or (c) going up a gully. _____
6. What is the distance in miles from point B to point D? _____

Part 2: Use the “Reading Topographic Maps” article to answer the following questions.

1. What is the elevation of Dragontail Peak? (See Figure 3) _____
2. What is the elevation of Crystal Lake? (See Figure 4) _____
3. What is the contour interval on the small-scale map of Denali (Mt. McKinley)? (See Figure 5)

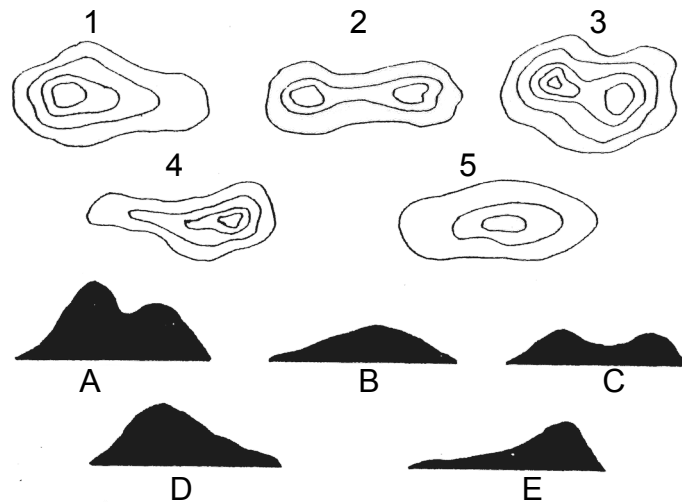
4. What is the contour interval on the map of farmland in central Kansas? (See Figure 6)

5. What is the contour interval on the large-scale map of Denali (Mt. McKinley)? (See Figure 7)

6. What is the contour interval on the Hole-In-The-Ground map? (See Figure 8) _____
7. How tall are the cliffs at Hole-In-The-Ground? (See Figure 8) _____
8. What direction is the creek flowing in Figure 10? _____
9. What is the contour interval on the map shown in Figure 10? _____
10. What is the contour interval on the map shown in Figure 11? _____

Part 3: Match each map with the mountain it represents.

Number	Letter
1	
2	
3	
4	
5	



Part 4: Match each map with the description of the mountain it represents.

Number	Letter
1	
2	
3	
4	
5	

1. Has two summits—the eastern one the higher.
2. Has its steepest slope on the southeast.
3. Is a round hill with twin summits.
4. It descends vertically on the west side.
5. The northern slopes are very steep.