

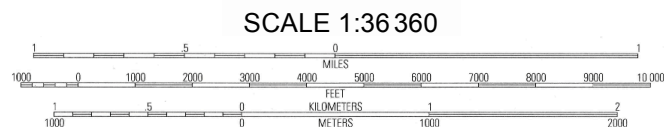
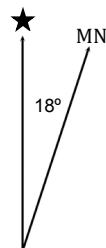
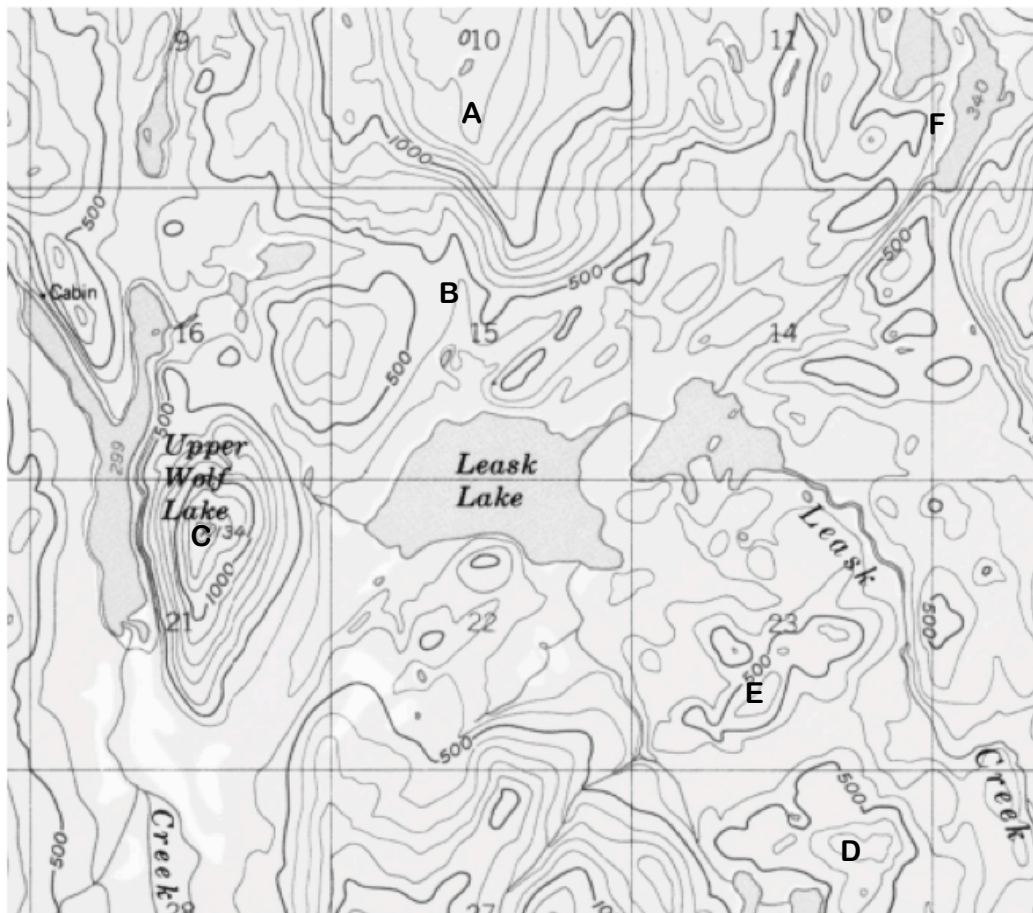
# Contour Quiz

Name \_\_\_\_\_

Period \_\_\_\_\_

Date \_\_\_\_\_

**Part 1:** Analyze the topographic map to answer the questions below.



CONTOUR INTERVAL = 100 FEET  
DATUM IS MEAN SEA LEVEL

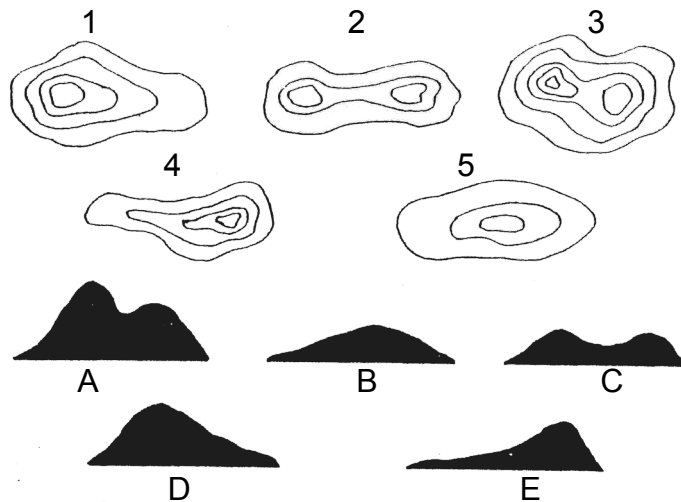
1. You are standing at point A. What is your elevation? \_\_\_\_\_
2. You are standing at point C, looking towards Upper Wolf Lake. Describe the topography directly in front of you. \_\_\_\_\_
3. You walk from point D to point E. Do you (a) gain elevation, (b) lose elevation, or (c) end at the same elevation? \_\_\_\_\_
4. A creek joins lake F from the southwest. Does the creek flow into, or out of lake F? \_\_\_\_\_
5. You walk from point A to point B. You are (a) going up a steep hill, (b) going down a gully, or (c) going up a gully. \_\_\_\_\_
6. What is the distance in miles from point B to point D? \_\_\_\_\_

**Part 2:** Use the “Reading Topographic Maps” article to answer the following questions.

1. What is the elevation of Dragontail Peak? (See Figure 3) \_\_\_\_\_
2. What is the elevation of Crystal Lake? (See Figure 4) \_\_\_\_\_
3. What is the contour interval on the small-scale map of Denali (Mt. McKinley)? (See Figure 5)  
\_\_\_\_\_
4. What is the contour interval on the map of farmland in central Kansas? (See Figure 6)  
\_\_\_\_\_
5. What is the contour interval on the large-scale map of Denali (Mt. McKinley)? (See Figure 7)  
\_\_\_\_\_
6. What is the contour interval on the Hole-In-The-Ground map? (See Figure 8) \_\_\_\_\_
7. How tall are the cliffs at Hole-In-The-Ground? (See Figure 8) \_\_\_\_\_
8. What direction is the creek flowing in Figure 10? \_\_\_\_\_
9. What is the contour interval on the map shown in Figure 10? \_\_\_\_\_
10. What is the contour interval on the map shown in Figure 11? \_\_\_\_\_

**Part 3:** Match each map with the mountain it represents.

Number	Letter
1	
2	
3	
4	
5	



**Part 4:** Match each map with the description of the mountain it represents.

Number	Letter
1	
2	
3	
4	
5	

1. Has two summits—the eastern one the higher.
2. Has its steepest slope on the southeast.
3. Is a round hill with twin summits.
4. It descends vertically on the west side.
5. The northern slopes are very steep.